



## MF deel1

Metrisch ISO - fijne draad

Afmeting M-fijn	Voorboor Ømm
3 x 0.35	2.65
3.5 x 0.35	3.2
4 x 0.5	3.5
5 x 0.5	4.5
5.5 x 0.5	5.0
6 x 0.75	5.3
7 x 0.75	6.3
8 x 0.75	7.3
8 x 1	7.0
9 x 1	8.0
10 x 0.75	9.3
10 x 1	9.0
10 x 1.25	8.8
11 x 1	10.0
12 x 1	11.0
12 x 1.25	10.8
12 x 1.5	10.5
14 x 1	13.0
14 x 1.25	12.8
14 x 1.5	12.5
15 x 1	14.0
15 x 1.5	13.5
16 x 1	15.0
16 x 1.5	14.5
18 x 1	17.0
18 x 1.5	16.5
18 x 2	16.0
20 x 1	19.0
20 x 1.5	18.5
20 x 2	18.0
22 x 1	21.0
22 x 1.5	20.5
22 x 2	20.0
24 x 1	23.0
24 x 1.5	22.5
24 x 2	22.0
25 x 1	24.0
25 x 1.5	23.5
25 x 2	23.0
26 x 1.5	24.5
27 x 1.5	25.5
27 x 2	25.0
28 x 1.5	26.5
28 x 2	26.0

## MF deel2

Metrisch ISO - fijne draad

Afmeting M-fijn	Voorboor Ømm
30 x 1.5	28.5
30 x 2	28.0
32 x 1.5	30.5
32 x 2	30.0
33 x 2	31.0
35 x 1.5	33.5
36 x 1.5	34.5
36 x 2	34.0
36 x 3	33.0
38 x 1.5	36.5
39 x 3	36.0
40 x 1.5	38.5
40 x 2	38.0
40 x 3	37.0
42 x 1.5	40.5
42 x 2	40.0
42 x 3	39.0
45 x 1.5	43.5
45 x 2	43.0
45 x 3	42.0
48 x 1.5	46.5
48 x 2	46.0
48 x 3	45.0
50 x 1.5	48.2
50 x 2	48.0
50 x 3	47.0

## M

Metrisch ISO - schroefdraad

Afmeting M	Spoed mm	Voorboor Ømm
1.6	0.35	1.25
1.8	0.35	1.45
2	0.4	1.6
2.2	0.45	1.75
2.5	0.45	2.05
3	0.5	2.5
3.5	0.6	2.9
4	0.7	3.3
4.5	0.75	3.8
5	0.8	4.2
6	1	5.0
7	1	6.0
8	1.25	6.8
9	1.25	7.8
10	1.5	8.5
11	1.5	9.5
12	1.75	10.3
14	2	12.0
16	2	14.0
18	2.5	15.5
20	2.5	17.5
22	2.5	19.5
24	3	21.0
27	3	24.0
30	3.5	26.5
33	3.5	29.5
36	4	32.0
39	4	35.0
42	4.5	37.5
45	4.5	40.5
48	5	43.0
52	5	47.0

## NPS

Cilindrische Amerikaanse gasdraad

Afmeting NPS	Gangen per inch.	Voorboor Ømm
1/8	27	9.1
1/4	18	12.0
3/8	18	15.5
1/2	14	19.0
3/4	14	24.5
1	11.1/2	30.5
1.1/4	11.1/2	39.5
1.1/2	11.1/2	45.5
2	11.1/2	57.5
2.1/2	11.1/2	69.0
3	11.1/2	85.0

## PG

Panzerrohrdraad DIN 40430 gasdraad

Afmeting PG	Gangen per inch.	Voorboor Ømm
7	20	11.4
9	18	13.9
11	18	17.25
13.5	18	19.0
16	18	21.25
21	16	27.0
29	16	35.5
36	16	45.5
42	16	52.5
48	16	58.0



## BSW

British Standard-Whitworth

Afmeting BSW	Gangen per inch.	Voorboor Ømm
3/32	48	1.8
1/8	40	2.55
5/32	32	3.2
3/16	24	3.7
7/32	24	4.5
1/4	20	5.1
5/16	18	6.5
3/8	16	7.9
7/16	14	9.2
1/2	12	10.5
9/16	12	12.0
5/8	11	13.5
3/4	10	16.5
7/8	9	19.25
1	8	22.0
1.1/8	7	24.75
1.1/4	7	28.0
1.3/8	6	30.5
1.1/2	6	33.5
1.5/8	5	35.5
1.3/4	5	39.0
1.7/8	4.1/2	41.5
2	4.1/2	44.5

## BSF

British Standard-Fine

Afmeting BSW	Gangen per inch.	Voorboor Ømm
3/16	32	4.0
7/32	28	4.5
1/4	26	5.2
9/32	26	6.0
5/16	22	6.6
3/8	20	8.1
7/16	18	9.5
1/2	16	11.0
9/16	16	12.5
5/8	14	14.0
11/16	14	15.5
3/4	12	16.5
13/16	12	18.25
7/8	11	19.5
1	10	22.5
1.1/8	9	25.5
1.1/4	9	28.5
1.3/8	8	31.5
1.1/2	8	34.5
1.5/8	8	37.5

## BSPF (G)

Cilindrische Whitworth Gasdraad

Afmeting G	Gangen per inch.	Voorboor Ømm
1/8	28	8.8
1/4	19	11.8
3/8	19	15.25
1/2	14	19.0
5/8	14	21.0
3/4	14	24.5
7/8	14	28.0
1	11	30.5
1.1/4	11	39.5
1.1/2	11	45.0
1.3/4	11	51.0
2	11	57.0
2.1/4	11	63.0
2.1/2	11	72.5
2.3/4	11	79.0
3	11	85.5

## UNC

ISO Unified grove draad

Afmeting UNC	Gangen per inch.	Voorboor Ømm
No.2	56	1.8
No.3	48	2.0
No.4	40	2.35
No.5	40	2.65
No.6	32	2.85
No.8	32	3.5
No.10	24	3.9
No.12	24	4.5
1/4	20	5.1
5/16	18	6.6
3/8	16	8.0
7/16	14	9.4
1/2	13	10.8
9/16	12	12.2
5/8	11	13.5
3/4	10	16.5
7/8	9	19.5
1	8	22.25
1.1/8	7	25.0
1.1/4	7	28.0
1.3/8	6	30.5
1.1/2	6	34.0
1.3/4	5	39.5
2	4.1/2	45.0

## UNF

ISO Unified fijne draad

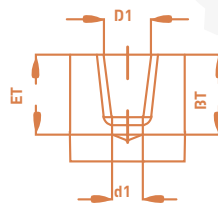
Afmeting UNF	Gangen per inch.	Voorboor Ømm
No.2	64	1.8
No.3	56	2.1
No.4	48	2.4
No.5	44	2.7
No.6	40	2.95
No.8	36	3.5
No.10	32	4.1
No.12	28	4.7
1/4	28	5.5
5/16	24	6.9
3/8	24	8.5
7/16	20	9.9
1/2	20	11.5
9/16	18	12.9
5/8	18	14.5
3/4	16	17.5
7/8	14	20.5
1	12	23.25
1.1/8	12	26.5
1.1/4	12	29.5
1.3/8	12	33.0
1.1/2	12	36.0



## BSPT (Rc)

Conische Whitworth Gasdraad (1:16)

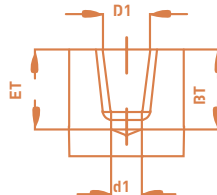
Afmeting Rc	Gangen per inch.	Voorboor ø d1 mm cilindrisch	Voorboor ø d1 mm cilindrisch	Draad- diepte ET mm	Boor- diepte BT mm
1/16	28	6.3	6.49	9.31	10.1
1/8	28	8.3	8.5	9.31	10.1
1/4	19	11.0	11.35	12.37	15.0
3/8	19	14.5	14.85	12.77	15.4
1/2	14	18.1	18.49	16.83	20.5
3/4	14	23.5	23.98	18.13	21.8
1	11	29.6	30.11	21.42	26.0
1.1/4	11	38.1	38.78	23.72	28.3
1.1/2	11	44.0	44.67	23.72	28.3
2	11	55.6	56.48	28.02	32.6
2.1/2	11	71.1	72.0	31.32	37.1
3	11	83.6	84.71	34.42	40.2



## NPT

Conische Amerikaanse Gasdraad (1:16)

Afmeting NPT	Gangen per inch.	Voorboor ø d1 mm cilindrisch	Voorboor ø d1 mm cilindrisch	Draad- diepte ET mm	Boor- diepte BT mm
1/16	27	6.25	6.4	9.29	10.7
1/8	27	8.4	8.7	9.32	10.8
1/4	18	11.1	11.4	13.52	15.6
3/8	18	14.3	14.7	13.83	16.0
1/2	14	17.9	18.3	18.07	20.8
3/4	14	23.0	23.7	18.55	21.3
1	11.1/2	29.0	29.7	22.29	25.6
1.1/4	11.1/2	37.7	38.4	22.8	26.1
1.1/2	11.1/2	44.0	44.5	22.8	26.1
2	11.1/2	56.0	56.6	23.2	26.5
2.1/2	8	66.7	67.6	34.57	36.3



## NPTF

Conische Amerikaanse Gasdraad (droge dichting) (1:16)

Afmeting NPTF	Gangen per inch.	Voorboor ø d1 mm cilindrisch	Voorboor ø d1 mm cilindrisch	Draad- diepte ET mm	Boor- diepte BT mm
1/16	27	6.25	6.4	9.29	10.3
1/8	27	8.6	8.7	9.32	10.3
1/4	18	11.1	11.4	13.52	15.0
3/8	18	14.7	14.8	13.83	15.3
1/2	14	17.9	18.3	18.07	19.9
3/4	14	23.4	23.6	18.55	20.4
1	11.1/2	29.4	29.7	22.29	24.5
1.1/4	11.1/2	38.1	38.4	22.8	25.0
1.1/2	11.1/2	44.0	44.5	22.8	25.0
2	11.1/2	56.4	56.5	23.2	25.4
2.1/2	8	67.0	67.6	34.75	38.0
3	8	83.0	83.5	36.88	40.0

